

ISLEHAM WEEKLY NEWS

Week commencing: Monday 18th June 2018



JAY'S CHARITIES- SCHOOL FUNDRAISING EVENING



We are holding a special Fundraising performance of 'Aladdin Trouble' (performed by Year 5 & 6) in the School Hall on Tuesday 26th June at 6.00pm. Tickets are £2.50 each (limited to 3 per family), and there will be a raffle on the evening, and a donations container for those wishing to purchase programmes.

We are hoping that you will give generously in order to support the family of Year 1 pupil Jay Davison as they are currently fundraising via Just Giving to raise £10,000 to help fund alternative treatment and/or clinical trial expenses for Jay if needed. The family will be donating the funds to two worthwhile charities- The Brain Tumour Charity and Children with Cancer UK if they are not needed for Jay, which means your donations will definitely be used to support families and children battling cancer.

PLEASE LET THE OFFICE KNOW AS SOON AS POSSIBLE IF YOU WOULD LIKE TO BUY A TICKET FOR THE FUNDRAISING PERFORMANCE ON TUESDAY 26TH JUNE. Tickets will be first-come, first-served.

THANK YOU FOR RAFFLE PRIZES ALREADY RECEIVED BY THE OFFICE- PLEASE SEND IN YOUR RAFFLE GIFTS TO THE OFFICE THIS WEEK

If you are unable to get tickets to the show or to attend on that evening, but would like to donate to Jay's fundraising, please see the link below to the family's Just Giving page.

<https://www.justgiving.com/crowdfunding/jaysjourney2017>

CLASS ASSEMBLY CONGRATULATIONS

Well done to Year 2 for their super assembly last Friday. The children's sponge javelin throwing, maths skills, story skills and artwork were really impressive.

NEXT OPPORTUNITIES TO JOIN YOUR CHILDREN IN SCHOOL

There are two important dates coming up in the school calendar which parents are invited to come along and support:-

Sports morning on the 29th June at 9.30am (Reception & Key Stage 1) & 10.30am (Key Stage 2)

&

The Summer Concert & School Barbecue on the 5th July at 5.30pm. (All years)



Isleham Church of England Primary School
Malting Lane, Isleham, Ely, Cambridgeshire, CB7 5RZ

Telephone: 01638 780336

Email: office@isleham.cambs.sch.uk

www.isleham.cambs.sch.uk

The Summer Concert will offer the perfect opportunity for the school to be together on the field in order to perform together and say farewell to our leaving staff. All class groups will be performing songs. Please can ALL children attend.

Please bring a fold-up chair to these events if you would like to sit down and/or a picnic blanket.

Please can I remind parents and family members attending events at the school that we try to have a common-sense approach to photographs and video in school at special events- we do try to enable parents to take photos or film focusing on their own child, but where these have other people's children in view, please DO NOT post the photographs on social media or share outside the school network without the express permission of all involved. Thank you.

VALUE OF THE WEEK

In our assemblies this week and next, we are thinking about our school value of 'Justice'.

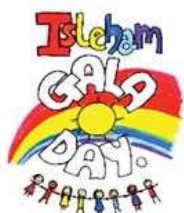


YEAR 5 & 6 SCIENCE WORKSHOPS

Year 5 & 6 enjoyed their day of Science workshops on Wednesday last week. Year 6 are shown here extracting DNA from strawberries!

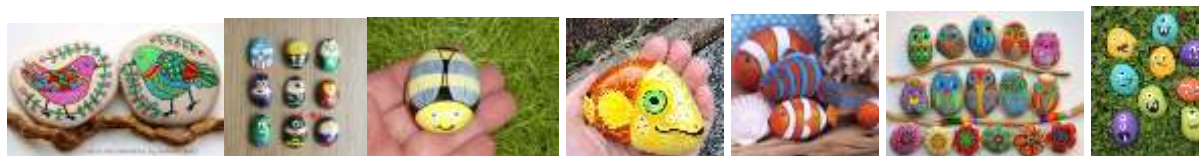


ISLEHAM GALA DAY 2018



Parents of children in Year 4, 6 and Reception are asked to please return the slip below by Friday 22nd June. All children are also reminded of the 'Paint a pebble' competition- please bring your rocks in this week.

'PAINT A PEBBLE' GALA COMPETITION



We have been invited to submit entries for a competition to paint a special 'Isleham gala' pebble/ rock this year. Your entries are invited by Friday 22nd June. Please bring your rock/ pebble along to the office and ensure it is clearly labelled with your child's full name and year group. We haven't had any entries yet,



Isleham Church of England Primary School
Malting Lane, Isleham, Ely, Cambridgeshire, CB7 5RZ
Telephone: 01638 780336
Email: office@isleham.cambs.sch.uk
www.isleham.cambs.sch.uk

so please get painting! You can choose any favourite theme for your pebbles. There will be some lovely prizes provided by the Gala Committee for the winners.

GALA DAY REPLY SLIP- Please return to the office by Friday 22nd June 2018

Reception parents

My child _____ is willing to join the school Gala Day 'World of Books' themed gala float, and will be available from 12.30pm on Saturday 7th July 2018. I understand that my child will need to travel on the float dressed as a book character with Mrs Skillern and the other children, and that I will need to remain near the float throughout the procession and meet my child at The Beeches recreation ground at the end of the procession at approximately 1.30pm.

My child would be willing to be the King or Queen instead of a book character.
(Names will be drawn out of a hat on the 22nd June for this role- please do NOT promise your child that they can do this, as the only fair way to allocate these roles is to choose 2 names at random.)

Please tick if
willing:

Year 4 parents (& Year 5/6 brass players)

My child _____ will/ will not be available to join the school brass band performance on Gala Day at 3.15pm in the main hall at The Beeches.

Year 6 parents

My child _____ will/ will not be available to join the school ukulele band performance on Gala Day at 3.20pm in the main hall at The Beeches. (For band performances, please deliver children to the hall by 3.05pm and remain in the hall to collect at approximately 3.40pm.)

Signed _____ Date _____

BIRTHDAYS

Many happy returns of the day to children who are celebrating birthdays this week



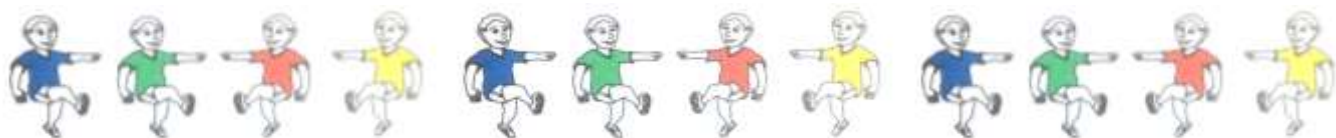
PIZZA EXPRESS PERFECTION

Huge thanks to Pizza Express Newmarket for hosting our Year 6 pupils last Wednesday and enabling them all to make their own pizzas. The children had a super time.



Isleham Church of England Primary School
Malting Lane, Isleham, Ely, Cambridgeshire, CB7 5RZ
Telephone: 01638 780336
Email: office@isleham.cambs.sch.uk
www.isleham.cambs.sch.uk

SPORTS DAY 2018 TIMINGS



Please bring a chair so you can enjoy watching the races in comfort, and please wear your trainers or suitable footwear for the parents' races which will take place just before each of the Key Stage presentation ceremonies!

Key Stage 1 & Reception

9.30am-10.00am- Key Stage 1 & races in year groups

10.00am- 10.20am- Children assemble in centre rectangle- House team event, Parents' races & Presentation ceremony

10.30am- Key Stage 1 all go inside for break & tracks cleared for Key Stage 2 races

Key Stage 2

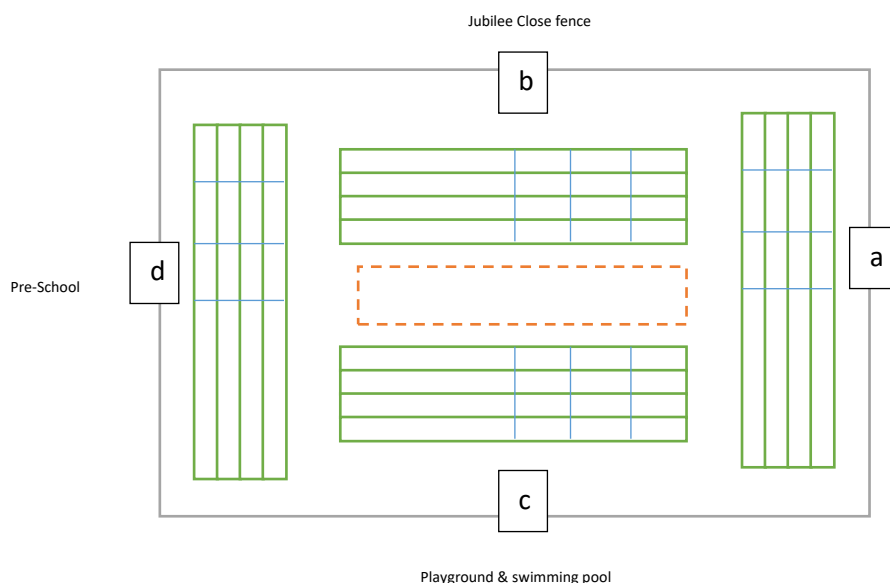
10.30am- Key Stage 2 races on year group tracks

11.15am-11.35am- Children assemble in centre rectangle- Parents' races/ Class tug-of-war & Presentation ceremony

11.45am- Key Stage 2 all go inside for cool down and to collect lunches.

12.00pm- all children to field for picnic lunch with parents (Please note that if your child has a school lunch and you would like them to join you on the field, they must order a 'grab& go' option 3 lunch on Sports Day)

Track layout



Isleham Church of England Primary School
Malting Lane, Isleham, Ely, Cambridgeshire, CB7 5RZ
Telephone: 01638 780336
Email: office@isleham.cambs.sch.uk
www.isleham.cambs.sch.uk

Spectators should please sit/stand outside the perimeter line near the fence closest to their child's track. Then, for the presentation ceremonies, spectators are welcome to move to sit/ stand on track b.

Key Stage 1	Key Stage 2
Track a-Year R	Track a-Year 3
Track b-Year 1	Track b-Year 4
Track c-Year 2	Track c-Year 5
	Track d-Year 6

HANDWRITING AWARDS



The recipients of the weekly Handwriting award last week were:-

Week commencing:-	Reception	Year 1	Year 2	Year 3
11 th June 2018	Eleanor	Evelyn	Lila	Jesse

Well done to all four children for their super handwriting efforts.

MENU THIS WEEK

This week's menu options are listed below:-



	MONDAY	TUESDAY	WEDNESDAY	THURSDAY	FRIDAY
OPTION 1	Margarita pizza with jewelled couscous	All day brunch Omelette, sausage, bacon and diced potatoes	Pork meatballs & spaghetti	Roast turkey, stuffing and gravy with crispy roast potatoes or mashed potatoes	Crispy bubble fish fillet and chips
OPTION 2	Spanish Quorn paella	Veggie all day brunch Omelette, veggie sausages and diced potatoes	Summer quiche & pasta salad	Stuffed roast peppers with crispy roast potatoes or mashed potatoes	Quorn dippers with barbecue dip and chips
OPTION 3	'Grab & go' lunch bags- see options below				
SIDES	Sweetcorn Coleslaw	Baked beans Grilled tomatoes	Baked beans Grilled tomatoes	Fresh broccoli Carrots	Garden peas Tomato spaghetti hoops
DESSERTS	Flapjack and milk Fresh fruit slices	Chocolate shortbread Fresh fruit	Jelly and ice cream Fresh fruit slices Cheese and crackers	Lemon mousse Fresh yoghurt Fresh fruit slices	Berry slice with custard Fresh fruit slices Fresh yoghurt



Isleham Church of England Primary School
Malting Lane, Isleham, Ely, Cambridgeshire, CB7 5RZ
Telephone: 01638 780336
Email: office@isleham.cambs.sch.uk
www.isleham.cambs.sch.uk

Option 3 is the 'grab & go' packed lunch bag- There will be one option per day for the 'grab & go' bag as listed below with the exception of days when the offered option contains a meat product, when vegetarian pupils can opt for a cheese roll.

Monday	Tuesday	Wednesday	Thursday	Friday
Pizza	Cheese roll	Ham roll	Tuna roll	Egg mayo roll
Carrot & cucumber	Carrot & cucumber	Carrot & cucumber	Carrot & cucumber	Carrot & cucumber
Fruit	Fruit	Fruit	Fruit	Fruit
Flapjack	Cupcake	Chocolate shortbread	Ginger biscuit	Cheese & biscuits

SUMMER TERM DATES FOR YOUR DIARY

Wednesday 20th June- KS2 'Matilda' London Theatre trip

Thursday 21st June – Y6 Residential Meeting- School Hall- 6pm

Monday 25th June- 1.45pm- Year 5/6 Production dress rehearsal

Tuesday 26th June- 1.45pm- Year 5/6 Production 1 of 2 (2 tickets per family in Year 5 & 6 allocated)

Tuesday 26th June- 6.00pm- Year 5/6 Production 'Aladdin Trouble'- Charity Fundraiser performance (Tickets £2.50 per person available from the office- maximum of 3 tickets per family- first-come, first-served)

Wednesday 27th June- 6.00pm- Year 5/6 Production 2 of 2 (2 tickets per family in Year 5 & 6 allocated)

Friday 29th June- Sports morning (Key Stage 1 & Reception- 9.30am, Key Stage 2- 10.30am)

Wednesday 4th July – SVC Y6 Transition Day & Move-up day at Isleham (children to spend day in new classes for September 2018)

Thursday 5th July- Cambridgeshire Primary Schools' Netball Final in Chatteris (selected pupils) 12.30pm-4.30pm

Thursday 5th July- Summer Concert **5.30pm** & PTA Barbecue

Saturday 7th July- Isleham Gala Day- School float in procession from 12.30pm- Bands in The Beeches hall from 3.05pm

Monday 9th- Wednesday 11th July- Year 6 Residential visit to the Horstead Centre

Monday 9th July- Art Workshop for Year 5 pupils at MCA

Thursday 12th July- PTA AGM at 3.30pm- ALL PARENTS WELCOME. We will be forming the committee for the coming year.

Friday 13th July – Y6 Rounders Tournament / PTA Leavers' Disco

Monday 16th July- Sports morning (if 29.6.18 cancelled)

Wednesday 18th July- Summer Concert (if 5.7.18 cancelled)

Friday 20th July (am)- Year 6 Leavers' assembly & final service of the year in the School Hall- Year 6 parents welcome to attend

ECO SCHOOLS COINS COLLECTION

If you have any spare coins, the Eco Schools club are collecting pennies and small change in the tubs in each classroom this week in order to send off a small donation to an animal care charity- they are offering a lolly ice to each child in the class who manage to collect the most in small change. Thank you to everyone who has already sent in some coins for the class pots!



Isleham Church of England Primary School
Malting Lane, Isleham, Ely, Cambridgeshire, CB7 5RZ

Telephone: 01638 780336

Email: office@isleham.cambs.sch.uk

www.isleham.cambs.sch.uk