

# ISLEHAM WEEKLY NEWS

Week commencing: Friday 8th May 2020



## VE DAY 75<sup>TH</sup> ANNIVERSARY

Well done to all of you who have continued to spread joy this week with decorations, baking and learning about VE Day - Victory in Europe Day. In 2020, we are celebrating the end of the Second World War 75 years ago today.

This lovely poster was created by the team of children in school on Monday this week and shared by Cambridgeshire County Council as part of their Schools in Cambridgeshire VE Day anniversary compilation. Well done to all involved.

Thank you to all of you for continuing your learning at home at present until such time as the school can reopen. Don't forget our school childcare remains open every week day. At the moment, the provision is only open to key worker children and those considered vulnerable; we will be sending further updates about when the school can reopen or extend its provision as soon as these are available, as well as information about transition arrangements for those due to join secondary school or join our school.

We are awaiting the Prime Minister's speech on Sunday this week to find out what safety measures may be put in place in the coming weeks and months to avoid the spread of the Coronavirus, and what this means for us in school.

Please don't hesitate to get in touch if you have any personal concerns or queries- [head@isleham.cambs.sch.uk](mailto:head@isleham.cambs.sch.uk)  
With all best wishes for the week ahead,  
Mrs Skillern



Isleham Church of England Primary School  
Malting Lane, Isleham, Ely, Cambridgeshire, CB7 5RZ  
Telephone: 01638 780336  
Email: [office@isleham.cambs.sch.uk](mailto:office@isleham.cambs.sch.uk)  
[www.isleham.cambs.sch.uk](http://www.isleham.cambs.sch.uk)

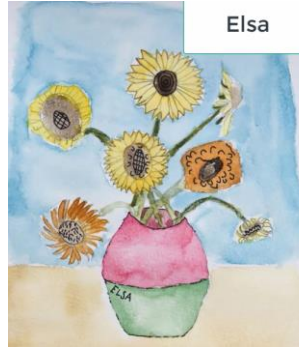
## FOCUS ON YEAR 3

Well done to everyone for your hard work this week in Year 3. Here are some highlights from Mr Walker of your work this week. It's wonderful to see your fantastic artwork and writing. Here are just some of the examples below:



Amelia

Beau



Elsa

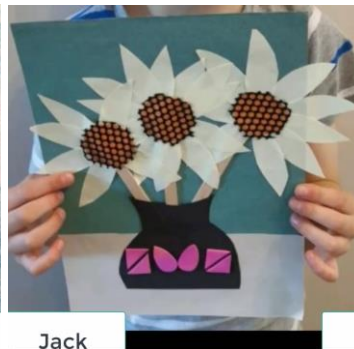


Evelyn



Florence

Isaiah



Jack



Lyra



Millie

Mollie



Rhys

### Beanstalk expedition

My first choice would be a iPhone . One reason is if I was in trouble I could call someone to help me if I got stuck up the beanstalk. Another reason is that iPhones have trackers on so my family would know where I was and at night I can FaceTime my family. My second choice would be a rucksack so I don't have to carry everything in my hands because I will need them to climb the beanstalk. Another reason to have a rucksack is if I fell off the beanstalk my rucksack would turn into, a parachute so I would land safely on the ground. My third choice would be a helmet with a built in head torch mainly because a helmet would protect my head if I bumped into something. Another reason to have a head torch built in is I don't have to worry about holding it in my hands. My fourth choice would be a everlasting box of chocolates so I won't run out of food on the expedition. Another reason to have a box of everlasting chocolates is they give you more energy to help you climb the beanstalk. My final choice is a bottle of never ending water. I would choose this water because I can survive without food but I cannot survive without water. My final reason would be that I never have to worry about needing to filling it up so I will never go thirsty.

### Florence



Isleham Church of England Primary School  
Malting Lane, Isleham, Ely, Cambridgeshire, CB7 5RZ  
Telephone: 01638 780336  
Email: [office@isleham.cambs.sch.uk](mailto:office@isleham.cambs.sch.uk)  
[www.isleham.cambs.sch.uk](http://www.isleham.cambs.sch.uk)

## PE KITS/ LOST PROPERTY

Thank you to everyone who picked up their PE Kit from school last week which was left in school at the end of term. There are still at least 20 PE kit bags left in school. We do need to clear the school for ongoing deep cleaning. Please collect your child's kit on any week day during school hours this week – if you ring the doorbell, a member of staff will come to the door and place your kit in the area outside the school so you can collect without coming into close contact with anyone.

## INFORMATION FOR PARENTS OF CHILDREN WITH SPECIAL EDUCATIONAL NEEDS & DISABILITIES

Are you confused as to what provision, if any, your child/ren should be receiving right now in this current climate?

Marion from SEND Partnership will be with us online next week on two separate occasions (via Zoom) to help clarify the temporary amendments to SEND regulations and Q & A session. Questions beforehand are most welcome to [laura@pinpoint-cambs.org.uk](mailto:laura@pinpoint-cambs.org.uk)

Marion will ensure they are covered in the live event. Book your ticket via eventbrite and get the Zoom link the night before.

Monday 11th May @ 9.30 am

Thursday 14th May @ 7.30 pm

<https://www.eventbrite.co.uk/o/pinpoint-cambridgeshire-10708270838>

We look forward to seeing you there. Any questions regarding these events, please email [laura@pinpoint-cambs.org.uk](mailto:laura@pinpoint-cambs.org.uk)



Isleham Church of England Primary School  
Malting Lane, Isleham, Ely, Cambridgeshire, CB7 5RZ  
Telephone: 01638 780336  
Email: [office@isleham.cambs.sch.uk](mailto:office@isleham.cambs.sch.uk)  
[www.isleham.cambs.sch.uk](http://www.isleham.cambs.sch.uk)



## COMMUNITY NEWS

Our Family Worker Linda Beeton has shared the information below:



## Parent/Carer support line

(from 7<sup>th</sup> May)

We offer an opportunity to speak to a friendly professional from the Early Help District Children's Team about any child or young person aged 0 to 19.

- You can ask a question, request support about your child's or young person's behaviours, get help with new routines and boundaries, or maybe just talk about how you are managing parenting in the current situation.
- We will give you advice, support, and help with signposting or just listen to your parenting experiences.

You can telephone or email for support any time, please leave a message with your contact details, someone will call you back (on a Tuesday or Thursday)

Phone 01354 750420

Email [Districtearlyhelpteam.cambridgecity@cambridgeshire.gov.uk](mailto:Districtearlyhelpteam.cambridgecity@cambridgeshire.gov.uk)

[www.cambridgeshire.gov.uk/child-and-family-centres](http://www.cambridgeshire.gov.uk/child-and-family-centres)



Isleham Church of England Primary School  
Malting Lane, Isleham, Ely, Cambridgeshire, CB7 5RZ  
Telephone: 01638 780336  
Email: [office@isleham.cambs.sch.uk](mailto:office@isleham.cambs.sch.uk)  
[www.isleham.cambs.sch.uk](http://www.isleham.cambs.sch.uk)