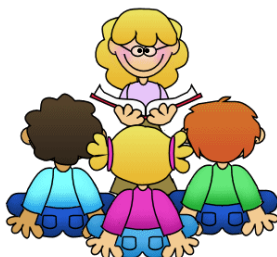


ISLEHAM WEEKLY NEWS

Week commencing: Monday 29th October



ISLEHAM READING CAFÉ INVITATION



Dear Parents/ Carers,

On Wednesday 7th November, we are holding an information morning to enable parents/carers to learn more about the way to develop reading at Isleham Primary School. The session will include lots of useful tips and ideas for how parents and carers can support the children at home in line with our skills-based approach to inference.

There will be refreshments in a café style setting before parents can then go to their child's class to see reading in action- there will no doubt be lots of enthusiastic children keen to show you what they know! Class teachers will be on hand to answer any questions and information will be available to be taken home to refer to when supporting reading at home.

There will be a KS1 talk first of all in the hall at 9am – 9.30am followed by time in Reception, Year 1 or Year 2 classes where teachers and children will be ready to welcome you, until 10.00am. Then the KS2 presentation will start at 10.15am - 10.45, followed by time in KS2 classes until 11.15 am.

We hope you will be able to attend as this will be a fantastic opportunity to enable you to support your child's reading at home even more effectively and help to strengthen the bond between home and school further. Please return the slip below so we know numbers to expect. We are very much looking forward to seeing you then!

With best wishes,

Ms Sassoli (English Subject Leader) and all the staff

REPLY SLIP: ISLEHAM READING CAFÉ- WEDNESDAY 7TH NOVEMBER 2018

* please delete as appropriate

I will be attending the reading café on Wednesday 7th November 2018 for...

KS1 9.am – 10.00am *

KS2 10.15am – 11.15am *

Number of attendees _____

Signed _____ Parent/ carer of _____



Isleham Church of England Primary School
Malting Lane, Isleham, Ely, Cambridgeshire, CB7 5RZ
Telephone: 01638 780336
Email: office@isleham.cambs.sch.uk
www.isleham.cambs.sch.uk

YEAR 4 G'S TRIP

On Tuesday 16th October, Year 4 visited G's Farm where they learnt about the history of G's, and why the Fens is such a good area for growing crops – particularly salad vegetables like celery. We learnt how celery is harvested and saw one of the rigs in action which was fascinating! We also had a tour of their mushroom factory where we saw the different stages of growing and the packing room. The children found it interesting to see all the work that goes into producing their food and most likely will never look at a stick of celery in the same way again!



CLASS ASSEMBLIES THIS TERM

Please see the dates below and overleaf, and in our Diary dates compilation at the end of the newsletter for remaining class assemblies this term:-

Friday 2nd November- Year 6 Class Assembly

Friday 9th November- Year 3 Class Assembly

Friday 16th November- Year 1 Class Assembly

Friday 23rd November- Year 2 Class Assembly

Please note that Reception do not present a Class Assembly in this first term but instead can share their work with parents on a weekly basis via their open classrooms- Thursdays after school until 3.35pm.

STAR OF THE WEEK



On Thursday afternoon before half term, the following children were awarded 'Star of the Week' certificates...

Year 1- Owen for building confidence in his writing

Year 2- Saffron for working hard to improve her concentration during lessons

Year 3- Poppy for trying hard in Maths



Year 4- Christopher for trying hard with his handwriting to make it smaller

Year 5- Charlotte A for a fantastic creative story about the Victorian classroom

Year 6- Joshua for super creative writing and Phoenix for excellent behaviour and creative work.

WELL DONE TO ALL THESE CHILDREN.

SAMARITAN'S PURSE OPERATION CHRISTMAS CHILD SHOEBOX APPEAL



Once again Pound Lane Free Church in Isleham is acting as a regional drop-off and sorting centre for Operation Christmas Child shoebox gifts. The project aims to offer a Christmas gift box to some of the most needy children around the world, who without this scheme would not have any gifts at Christmas time. A leaflet was sent home with your children before Half term detailing the suggested gifts which could be included in the shoebox and the monetary donation required to cover shipping costs and processing costs.

School families are welcome to fill their own box, and bring this along to school for collection by Friday 9th November, or help to fill one of the two class boxes in each room.

Each of the class boxes will need :-

Toys

Include items that children will immediately embrace such as dolls or stuffed toys (with CE label), toy trucks, harmonica, yo-yo, skipping rope, ball, small puzzles etc.

School Supplies

Pens, pencils & sharpeners, crayons or felt pens, stamps & ink pad sets, writing pads or notebooks & paper, solar calculators, colouring & picture books etc.

Hygiene Items

Toothbrush, bars of wrapped soap, comb or hairbrush, flannel.

Other Items

Hat, cap, gloves or scarf, sunglasses, hair accessories, jewellery set, wind up torch

A £5 monetary donation

A letter to the child

Thank you in advance for your generosity. This year, it would be great if your child's name could be attached to the box with a post-it note so that we can include them in a photo shoot with their donated box(es).

ASSEMBLIES THIS WEEK



In our school assemblies each week, we explore some of the school's Christian values and share stories from the Bible. This week, we will be thinking about the story of the great escape from the book of Exodus and how Moses lead his people through the wilderness.

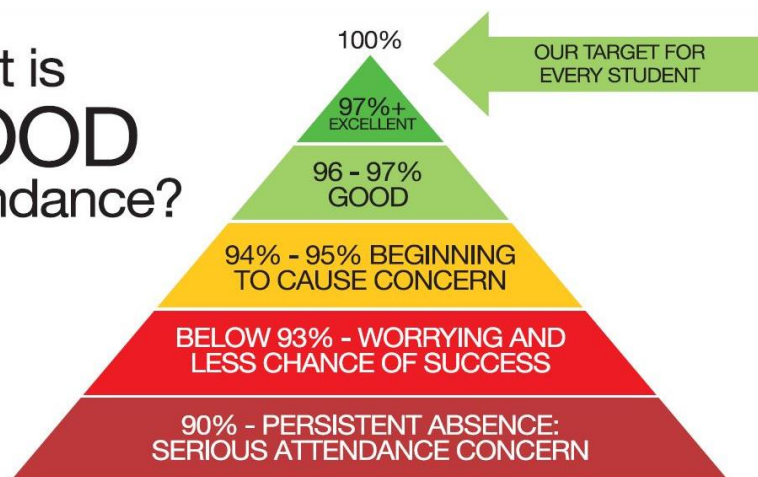


Isleham Church of England Primary School
Malting Lane, Isleham, Ely, Cambridgeshire, CB7 5RZ
Telephone: 01638 780336
Email: office@isleham.cambs.sch.uk
www.isleham.cambs.sch.uk

ATTENDANCE

Several families will be receiving letters this week about their children's poorer attendance or repeated lateness during the first half of this school year. Please note that children are expected to be in school for all timetabled sessions during term-time and this gives them the best possible chance of success. Leave of absence cannot be granted except in extreme circumstances. If your child has been ill during the first half of the autumn term, and this has triggered an attendance letter, we do understand that absence may have been unavoidable and that you will try to avoid any further absence. Obviously, if your child has been seen by a GP and been advised not to attend school, has a contagious illness or has a stomach bug, he or she must stay at home, but for minor symptoms such as a cough or cold, your child should please come to school. Our school day now starts promptly at 8.55am and ends at 3.15pm.

What is GOOD attendance?



"Every Day Counts"

1 or 2 days a week doesn't seem that much but...

If your child misses	that equals...	which is...	and over 13 years of school that's...
1 day a fortnight	20 days per year	4 weeks per year	Nearly 1.5 years
1 day a week	40 days per year	8 weeks per year	Over 2.5 years
2 days a week	80 days per year	16 weeks per year	Over 5 Years
3 days a week	120 days per year	24 weeks per year	Nearly 8 years

WHY DOES IT MATTER IF MY CHILD IS LATE?

It may seem like 10 minutes isn't really that much, but for the typical school day of just over 6 hours, a child who is 10 minutes late every day will miss **30 hours** of school time that year- this is equivalent to one full week of learning. If a child is 10 minutes late getting to school, it also must be recognised that it is more like 20 minutes until they are actually learning. The impact on the class as a whole is even larger- the class schedule will be pushed back as each late pupil arrives, as the teacher will need to recap or repeat points to help a late pupil catch up. Please arrive to school on time- children can enter the school buildings from 8.50am and our lessons start promptly at 9am after the 8.55am register.



Isleham Church of England Primary School
Malting Lane, Isleham, Ely, Cambridgeshire, CB7 5RZ
Telephone: 01638 780336
Email: office@isleham.cambs.sch.uk
www.isleham.cambs.sch.uk

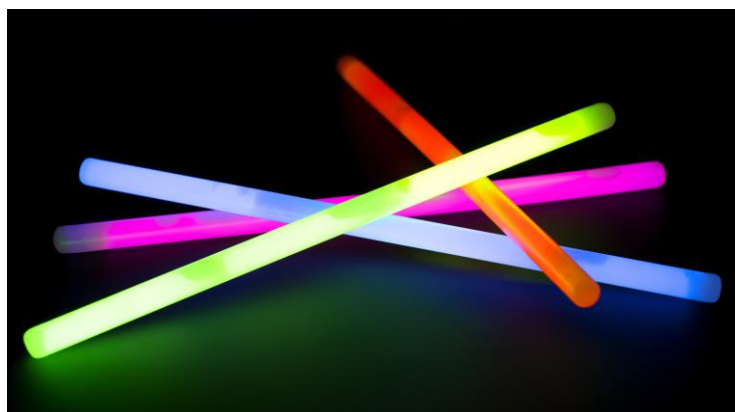
MENU THIS WEEK

This week's menu options are listed below. Please also see below next Monday's special 'Bonfire Night' menu on 5th November.

LUNCHTIME CO <i>Week 1</i> Commencing • 29th Oct • 19th Nov • 10th Dec • 7th Jan • 28th Jan • 25th Feb • 18th March					
MEAT FREE	Monday	Tuesday	Wednesday	Thursday	Friday
Freshly baked bread	Garlic bread	Wholemeal bread	Focaccia	Rosemary wholemeal bread	Garlic & herbed ciabatta
Menu choice 1	Vegetable burger with wedges	Chicken pasta	Beef lasagne	Roast pork with roast potatoes and yorkshire pudding	Fish fingers & chips with tomato ketchup
Menu choice 2	Jacket potato with cheese and beans	Penne pasta with tomato and basil sauce	Jacket potato with cheese and beans	Vegetarian sausages with roast potatoes and yorkshire pudding	Aubergine and pepper bake
Sides	Seasonable vegetables Selection of salads	Seasonable vegetables Selection of salads	Seasonable vegetables Selection of salads	Seasonable vegetables Selection of salads	Seasonable vegetables Selection of salads
Desserts	Chocolate brownie Sliced fresh fruit	Fudge tart Sliced fresh fruit	Sticky toffee pudding with toffee sauce Sliced fresh fruit	Fruit cookies Sliced fresh fruit	Marble cake Sliced fresh fruit
<i>Our mission is to make your lunchtime meal the highlight of your day.</i>					

Reminder from the PTA:

Hello! Hope you had a wonderful half term break. Just a reminder that the PTA will be selling glow sticks in the playground after school this Thursday and Friday (1st and 2nd November) in preparation for your bonfire night celebrations 🎆🎆



Isleham Church of England Primary School
Malting Lane, Isleham, Ely, Cambridgeshire, CB7 5RZ
Telephone: 01638 780336
Email: office@isleham.cambs.sch.uk
www.isleham.cambs.sch.uk

ISLEHAM POPPY PROJECT

The children were busy in the run-up to half term producing over 200 poppies for the Isleham community poppy project. The poppies have now been added to the beautiful cascading poppy display on show at St Andrew's Church Isleham. The school's Year 6 house captains will be present on Sunday 11th November at the village procession to the war memorial and church service to remember all those who lost their lives in the First and Second World wars. We will be selling poppies at the school office over the coming two weeks (while stocks last) for children and families to buy. (8.30am to 8.45am, and 3.15pm-3.30pm daily).



DATES FOR YOUR DIARY

Thursday 1st November- PTA sale of Glowsticks after school

Friday 2nd November- 2.45pm- Year 6 Class Assembly

Friday 2nd November- PTA sale of Glowsticks after school

Wednesday 7th November- Reading café for parents- 9.00am- Key Stage 1 parents, 10.15am- Key Stage 2 parents

Wednesday 7th November- Bags2School collection- please donate any unwanted clothes, shoes, belts, bags etc via the provided bag or in bin bags- the School PTA will receive a monetary donation for the weight of items collected.

Friday 9th November- 2.45pm- Year 3 Class Assembly

Friday 9th November- Deadline for Operation Christmas Child Shoeboxes

Sunday 11th November- 10.30am onwards- Year 6 House Captains to represent the school at the Isleham Remembrance Day service

Monday 12th November- HOUSE DAY- all children are invited to wear their house colours for our 'Royalty-themed' House Day

Friday 16th November- Year 5 & 6 Tag Rugby event at Witchford

Friday 16th November- 2.45pm- Year 1 Class Assembly

Friday 23rd November- 2.45pm- Year 2 Class Assembly

Wednesday 28th November- 2pm- Christingle Service at St Andrew's Church Isleham (parents welcome to attend and accompany the children on the short walk to the church, setting off from school at 1.30pm- please wear warm clothes!)

Friday 30th November- 2.45pm- Carols on the playground (weather permitting- please wear warm clothes) followed by PTA Christmas Fair

Saturday & Sunday 1st & 2nd / 8th & 9th December- Isleham Festival of Light in St Andrew's Church Isleham

Sunday 9th December- 4pm- Community Carols at St Andrew's Church Isleham

Tuesday 11th December- 2pm- Year R Nativity Concert (1 of 2)

Wednesday 12th December- 10am- Year R Nativity Concert (2 of 2)

Thursday 13th December- 2pm- Year 1 & 2 Performance of 'Hey Ewe!' (Show 1 of 2)

CHRISTMAS JUMPER DAY & Christmas lunch for all year groups

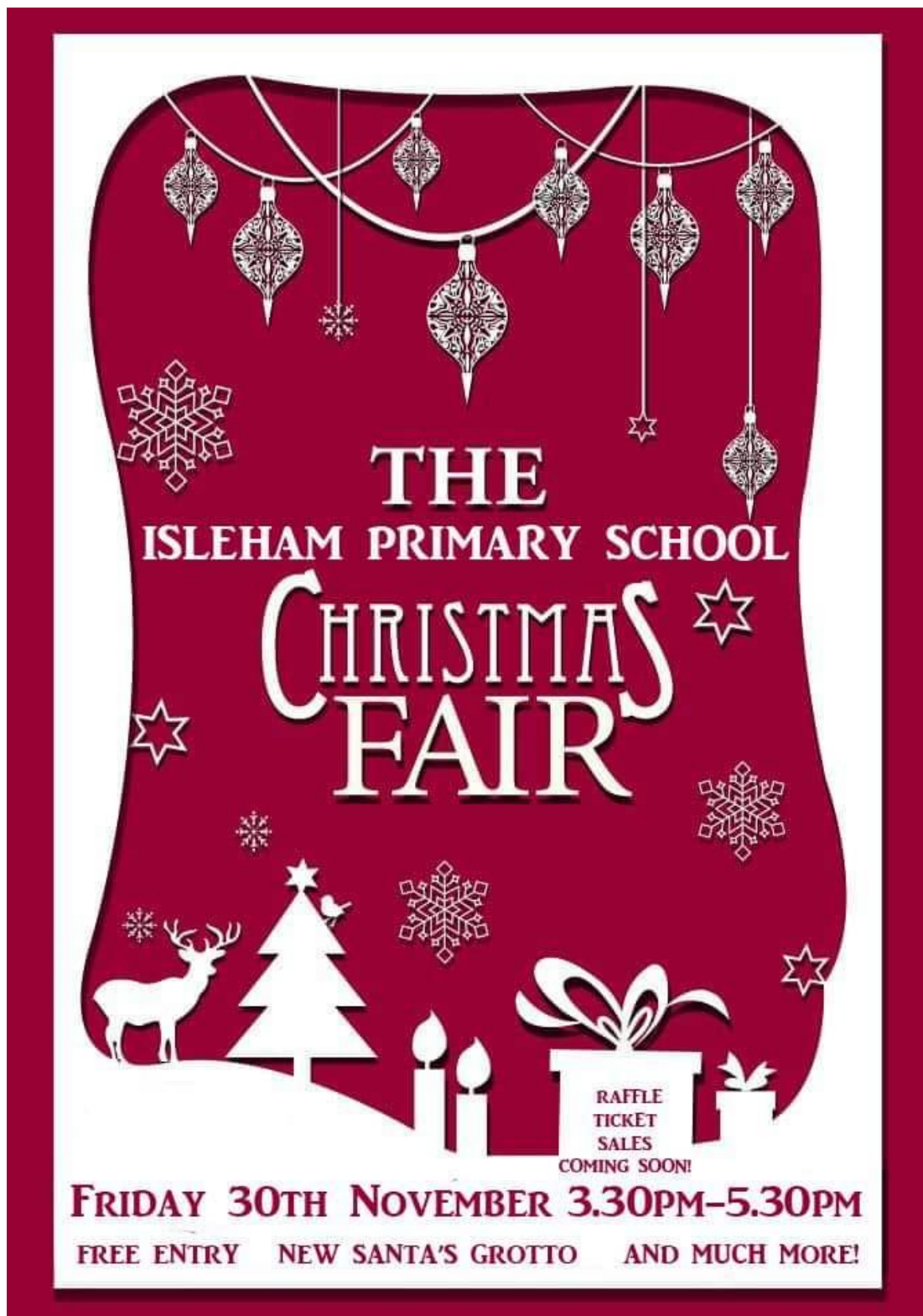


Isleham Church of England Primary School
Malting Lane, Isleham, Ely, Cambridgeshire, CB7 5RZ
Telephone: 01638 780336
Email: office@isleham.cambs.sch.uk
www.isleham.cambs.sch.uk

Friday 14th December- 10am - Year 1 & 2 Performance of 'Hey Ewe!' (Show 2 of 2)

Tuesday 18th December- 'Steve Sausage' show for all year groups and Christmas parties (pm)

Wednesday 19th December- Break up for Christmas holidays at the end of the school day



Isleham Church of England Primary School
Malting Lane, Isleham, Ely, Cambridgeshire, CB7 5RZ

Telephone: 01638 780336

Email: office@isleham.cambs.sch.uk

www.isleham.cambs.sch.uk



Parenting Taster Sessions

Thursday 12.30pm to 2.30pm

Starts 8 November for 3 weeks

Understanding challenging behaviour, parenting styles, labelling, sibling rivalry, effective discipline and birth order. Parenting sessions provide an opportunity for parents and carers to learn new skills that will help them and their children. For children aged 2-12 years of age.

To book your place call

Ely Child and Family Centre on 01353 611594

Ely Child and Family Centre

www.cambridgeshire.gov.uk/child-and-family-centres



Isleham Church of England Primary School
Malting Lane, Isleham, Ely, Cambridgeshire, CB7 5RZ
Telephone: 01638 780336
Email: office@isleham.cambs.sch.uk
www.isleham.cambs.sch.uk