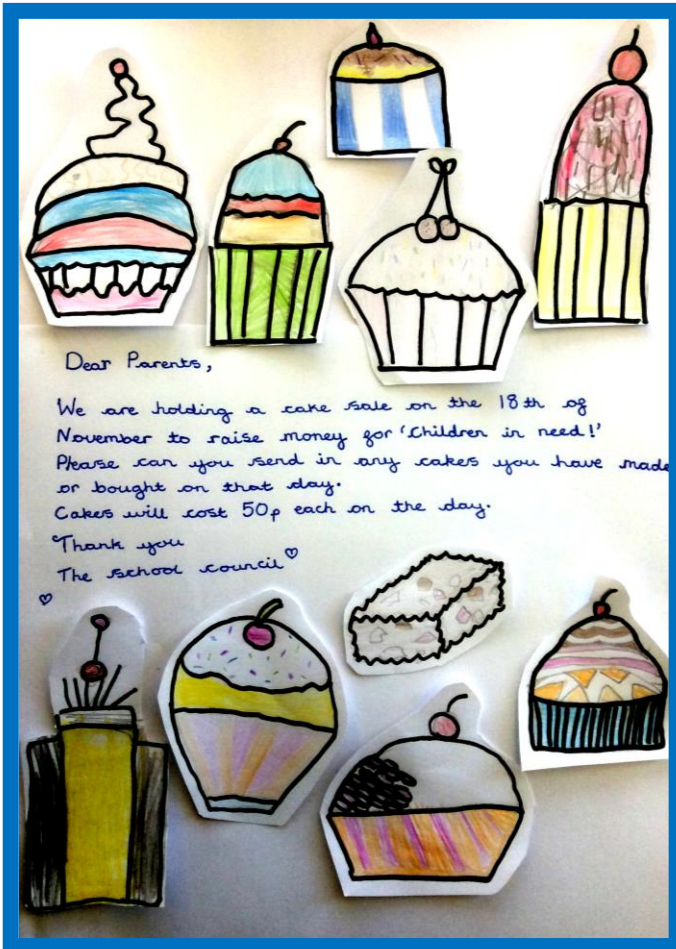


ISLEHAM WEEKLY NEWS

Week commencing: 14th November 2016



DON'T FORGET OUR CAKE SALE FOR 'CHILDREN IN NEED' THIS FRIDAY



SCHOOL COUNCIL CHILDREN IN NEED 'SPOTACULAR' DAY & CAKE SALE

On Friday the 18th November, we are holding our Spotacular 'home clothes' day. **Your children are invited to wear their own clothes, including something 'spotty', or an item of clothing which they have decorated with spots.** We will be holding a cake sale at break time to raise money for 'children in need'. Please help us by baking if you possibly can. **Cakes will cost 50p each**, and we hope that each child will be able to purchase at least one cake with any donations they bring in. All cake donations can be dropped off to the office on the morning of the 18th November. Please label clearly any cake tins or containers you would like returned.
THANK YOU FOR YOUR SUPPORT.



Isleham Church of England Primary School
Malting Lane, Isleham, Ely, Cambridgeshire, CB7 5RZ
Telephone: 01638 780336
Email: office@isleham.cambs.sch.uk
www.isleham.cambs.sch.uk

HANDWRITING AWARDS



Since half term we have introduced a new handwriting award in Reception, Year 1, 2 & 3 to recognise the careful work of individual children in developing neat and speedy writing.

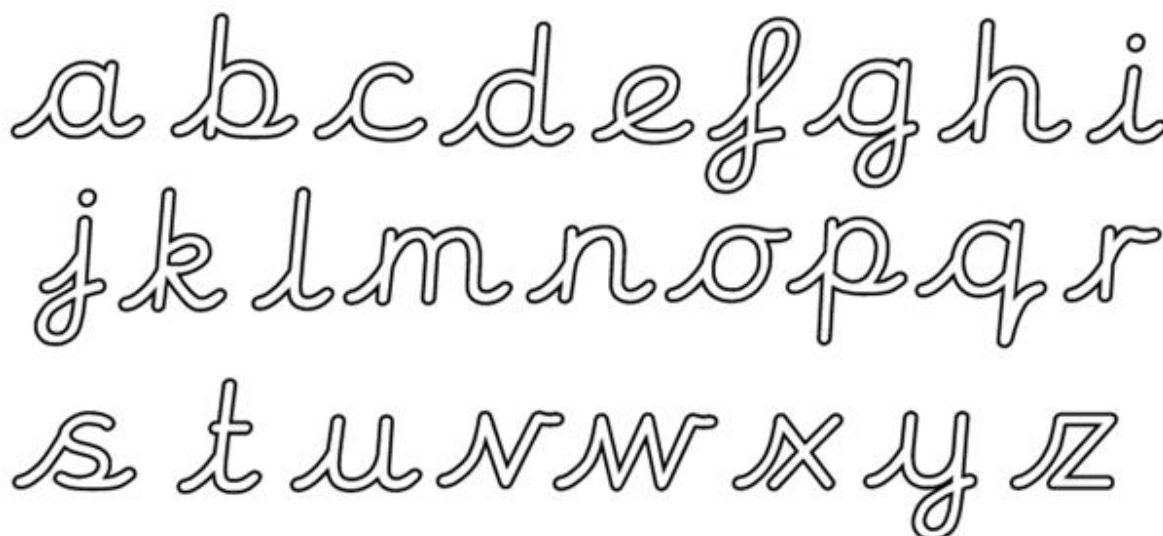
The recipients of this new award so far are to be congratulated:-

Week commencing:-	Reception	Year 1	Year 2	Year 3
31 st October	Florence	Henry T	Myles	Daniel
7 th November	Grace	Isla	Abigail	Callum

Well done to all!

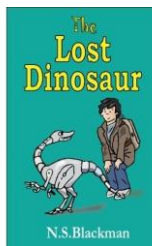
You will undoubtedly be aware that in our school, the children are encouraged to form their letters in a neat cursive script. This has the benefit of each lower case letter starting from the line when the children begin to write each one. Forming individual letters in this way leads very naturally on to joined writing and will help your children write speedily and neatly.

If your child is struggling to write fluently in a cursive script, please support by practising the pre-cursive letters shown below at home and encouraging correct formation from the start, initially ensuring that your child's own name is always correctly formed in cursive script. THANK YOU.



Isleham Church of England Primary School
Malting Lane, Isleham, Ely, Cambridgeshire, CB7 5RZ
Telephone: 01638 780336
Email: office@isleham.cambs.sch.uk
www.isleham.cambs.sch.uk

VISIT OF AUTHOR NIGEL BLACKMAN



Thank you for your pre-orders of signed books by visiting author Nigel Blackman, who is coming to Isleham **this Thursday the 17th November**. We look forward to Nigel joining us. If you have missed the opportunity to order a book, signed books can be purchased up until Thursday- please see the order form attached.

REMEMBRANCE DAY 2016

Congratulations and grateful thanks to the Year 6 House Captains who were superb ambassadors for the school at the annual Remembrance Sunday service in Isleham yesterday, and also to Max (Y5) and Adam (Y3) who were flag bearers for the cubs and beavers at the remembrance parade (photographed below).



MENU

Please find below details of this week's school menu. If you would like to order a school lunch for your child, please do so in advance via the online payment system- SIMS Agora. www.payyourschool.co.uk

	MONDAY	TUESDAY	WEDNESDAY	THURSDAY
MAIN	Local pork and apple grill in a bun	Leek and ham pasta bake with French bread	Organic minced beef pie with gravy and mashed potatoes	Roast chicken, stuffing and gravy with roast potatoes
DESSERTS	Fudge tart with chocolate sauce	Sticky toffee apple sponge with custard 	Wicked fruity Wednesday	Strawberry whip and a mini shortbread biscuit
	Fruit and yogurt granola pot 	Organic yogurt	Frozen yogurt	Organic yogurt

The special 'Children in Need' school lunch on Friday the 18th November will consist of:
Fish fingers, Chips,
Sweetcorn, Baked Beans & a Pudsey Bear cookie
The vegetarian option will be Jacket potato and beans

Menu changes:-

Wednesday's Beef Pie will now be Shepherd's Pie.



Isleham Church of England Primary School
Malting Lane, Isleham, Ely, Cambridgeshire, CB7 5RZ
Telephone: 01638 780336
Email: office@isleham.cambs.sch.uk
www.isleham.cambs.sch.uk

OPERATION CHRISTMAS CHILD- SHOEBOX APPEAL- DEADLINE THIS FRIDAY 18TH NOVEMBER

This week is the final week for you to donate to the Isleham branch of the Operation Christmas Child project. Please log on to the Samaritan's Purse website if you would like to find out more about how to wrap, pack and label your boxed gift.

<https://www.samaritans-purse.org.uk>

Please also feel free to put together a box between several families if you prefer; we will be collecting the boxes up until THIS FRIDAY November 18th in school. Please bring your box along to the school office.

Thank you to those who have already donated and everyone who is putting their box together this week.



LUNCHTIME CLUB NEWS

From last week until Christmas-time, Wednesday's recorder club will include Choir Practice for all children in Year 3, 4, 5 and 6 who would like to join the choir and be part of the group who visit the community for carol singing this Christmas-time.

MUSIC NEWS



Please note that unfortunately Mr Wright, the Music Teacher will not be in school on Friday 18th November, so these lessons will instead be delivered on Monday 21st November. Apologies for the change.

BIRTHDAYS

HAPPY BIRTHDAY TO ALL THE CHILDREN WHO CELEBRATE BIRTHDAYS THIS WEEK:-



PTA NEWS



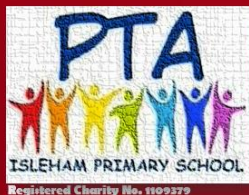
💡 A "Glo"ing Report

The PTA are pleased to announce that over £50 was raised from the sale of the Glo sticks for Bonfire Night! A massive thanks therefore to everyone; the money raised will, as ever, benefit the children and the whole school.



Isleham Church of England Primary School
Malting Lane, Isleham, Ely, Cambridgeshire, CB7 5RZ
Telephone: 01638 780336
Email: office@isleham.cambs.sch.uk
www.isleham.cambs.sch.uk

PTA CHRISTMAS FAIR & MARKET



would like to invite you to our annual

CHRISTMAS FAIR & MARKET

Monday 19 December 2016, at school, from 3.15 – 5.30 pm
(following children's carol singing on the playground from 2.45pm).

- 🎁 Local craft, gift and produce stalls
- 🎮 Christmas games, tombolas and lucky dip
- 🍰 Cakes, mince pies and mulled wine
- 🎅 Grand prize draw, carol singing and even a visit from Father Christmas himself!

Come along for some Christmas fun and support your child by supporting the PTA.



CALLING ALL POTENTIAL STALL HOLDERS

Would you or someone you know like to hold a stall at the Christmas Fair & market (3.15pm-5.30pm Monday 19th December)? This event is always extremely well attended, lots of fun and profitable!

We'll be offering Christmas games, tombolas and lucky dip, refreshments, our Grand prize draw, carol singing and even a visit from Father Christmas himself!

We're looking for local craft, gift and produce stalls, toys & books, stationery, jewellery, accessories, pottery & ceramics and any other 'cottage industries'.

So, if you feel that your product would benefit from inclusion at our event, please contact us as soon as possible on islehampta@gmail.com

RAFFLE PRIZES SOUGHT

Do you, or does someone you know, work for a company or organisation that might be prepared to donate a Christmas Fair raffle prize? All introductions gratefully received and treated with either the strictest confidence or widely advertised, according to preference. Please get in touch either via the school office, email us at islehampta@gmail.com, if you think you or someone you know may be able to help. Many thanks in anticipation.

DO YOU HAVE ANY UNWANTED GIFTS OR ITEMS WHICH YOU COULD DONATE TO THE 'FAIR' TOMBOLA?

The PTA are on the lookout for donations of any size and any value for the upcoming Christmas Fair & Market Tombola Stall. Be it unwanted gifts or food items still in their packaging, books and toys in good condition and obviously, it wouldn't be a Tombola without bottles (of any kind, but sealed please)! Bring any items to the office or hand to one of us on the playground. Thank you!






Isleham Church of England Primary School
Malting Lane, Isleham, Ely, Cambridgeshire, CB7 5RZ
Telephone: 01638 780336
Email: office@isleham.cambs.sch.uk
www.isleham.cambs.sch.uk

COMMUNITY NEWS- LOCAL THEATRE PRODUCTION



Tickets available at the venue, or visit www.librariantheatre.com

Venue Ely Library	Date Monday, 5 December	Time 7.30pm
Prices £7/4concs		Friends of Barham Library City of Westminster Libraries LOTTERY FUNDED

[@librariantheatr](https://twitter.com/librariantheatr) [/librariantheatre](https://www.facebook.com/librariantheatre)   

CAMBRIDGE UNITED FOOTBALL CLUB FREE TICKET PROMOTION



FREE MATCH TICKET

CAMBS GLASS STADIUM
CAMBRIDGE UNITED V CHELTENHAM TOWN
Saturday 26th November 2016

BOOK YOUR TICKETS AT CUFCDIRECT.COM

ENTER PROMO CODE
'CUSCHOOLS' TO SECURE YOUR
FREE CHILD TICKET.

ADULT TICKETS SUBSIDISED TO £10*

*SELECT SEATS IN THE SOUTH STAND.
BOOK NOW CUFCDIRECT.COM
01223 566500



Isleham Church of England Primary School
Malting Lane, Isleham, Ely, Cambridgeshire, CB7 5RZ
Telephone: 01638 780336
Email: office@isleham.cambs.sch.uk
www.isleham.cambs.sch.uk



Raising Children (FREE)

Got pre-school or school aged children?

Want some peace and harmony in the household?

Come along and let us help you with some parenting strategies, hints and tips.

- Look at why children do what they do.
- Find ways to encourage good behaviour and ways to deal with unacceptable behaviour.
- Learn how to build children's self-esteem and help them feel good about themselves.
- Discuss the pressures on parents today and how to look after yourself.

Weekly from Friday 27th January for ten weeks

9.30am to 11.30am at

Bottisham Children's Centre

To book a space, or for more information please contact us on 01353 727188
or email sohamchildrenscentre@cambridgeshire.gov.uk

www.cambridgeshirechildrenscentres.org.uk



LOCAL



Isleham Church of England Primary School
Malting Lane, Isleham, Ely, Cambridgeshire, CB7 5RZ
Telephone: 01638 780336
Email: office@isleham.cambs.sch.uk
www.isleham.cambs.sch.uk

COMPANY CHRISTMAS TREE SALES

Local business TFM Butchers have made us aware of a Colouring Competition they are running this Christmas time. They have invited school children to go along to Fenrose Farm from 10am on Saturday 26th November to meet Anna the Elf. Any children who take along a coloured 'TFM Colouring Competition' entry (see attached) will receive a free chocolate Christmas decoration. Alternatively, children can colour in a picture whilst Mum and dad choose a tree and enjoy a mince pie, a TFM Butchers' Sausage roll and/or a glass of mulled wine!

TFM Butchers, Fenrose Farm, 1 Fen Bank, Isleham CB7 5SL Tel: 01638 780994

Open: Tuesday: 10am-5.30pm, Thursday: 9am-5.30pm, Friday: 9am-5.30pm, Saturday: 10am-4pm & Sunday: 10am-12noon

DIARY DATES- THIS WEEK & REMAINDER OF AUTUMN TERM 2016 (INCLUDING KEY CHRISTMAS DATES)

- Monday 14th November- 8.55m Family Worker Parent Drop-in
- Monday 14th November- 9.00am Parents' phonic information session in the hall & open classrooms
- Thursday 17th November- visit of children's author Nigel Blackman
- Friday 18th November- 'Spotacular' Day in aid of 'Children in Need'- please wear something spotty or decorate yourself with spots, and bring a donation for 'Children in Need'. We will have a cake sale at break time, so any donations of cakes will be very gratefully received...
- Friday 18th November- Year5/6 Tag Rugby Event at Witchford Village College for selected pupils
- Friday 18th November- 2.40pm Year 6 Sharing assembly
- Friday 25th November- 2.40pm Year 3 Sharing assembly
- Thursday 1st December- 2pm Christingle Service in St Andrew's Church, Isleham. **All parents who are willing to escort the children on foot to the church for the service are welcome to meet us at 1.20pm in the playground. We do rely on your help in walking along the paths with us. Please let your child's class teacher know if you can help out. Thank you in advance.**
- Friday 2nd December- 2.40pm Year 4 Sharing assembly
- Monday 5th December- 2.15pm School Choir to sing at Limestone Close sheltered housing.
- Monday 12th December- 8.55am Family Worker Parent Drop-in
- Monday 12th December- Visiting pantomime company- 'Cinderella' for all pupils
- Tuesday 13th December- 9.30am Year R Nativity performance 1 of 2
- Tuesday 13th December- 3.15pm Open Classrooms after school
- Wednesday 14th December- 2.30pm Year R Nativity performance 2 of 2
- Thursday 15th December- 2.30pm Key Stage 1 Christmas Sing-a-long performance 1 of 2
- Friday 16th December- 9.30am Key Stage 1 Christmas Sing-a-long performance 2 of 2
- Monday 19th December- from 2.45pm PTA Event- carol singing on the playground, and Christmas Fayre after school
- Tuesday 20th December- End of term- break up for Christmas at end of school day



Isleham Church of England Primary School
Malting Lane, Isleham, Ely, Cambridgeshire, CB7 5RZ
Telephone: 01638 780336
Email: office@isleham.cambs.sch.uk
www.isleham.cambs.sch.uk